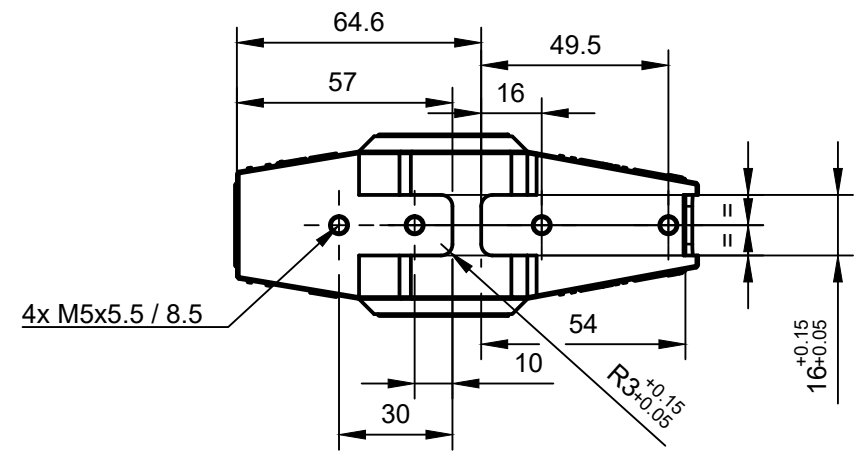
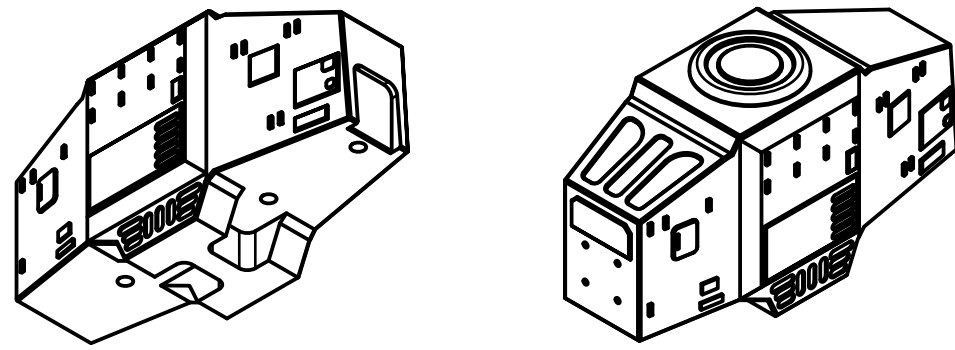
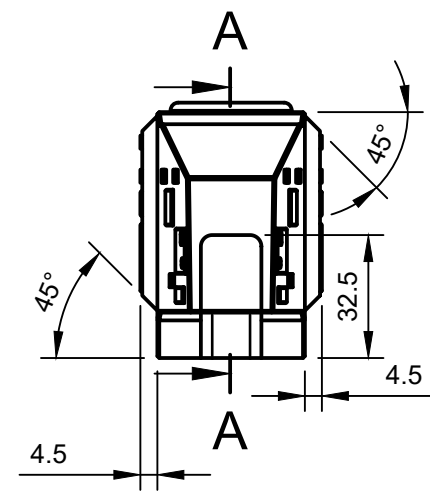
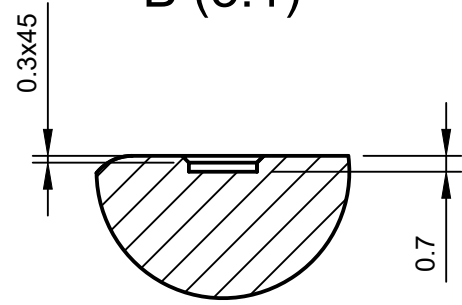


1 2 3 4 5 6 7 8

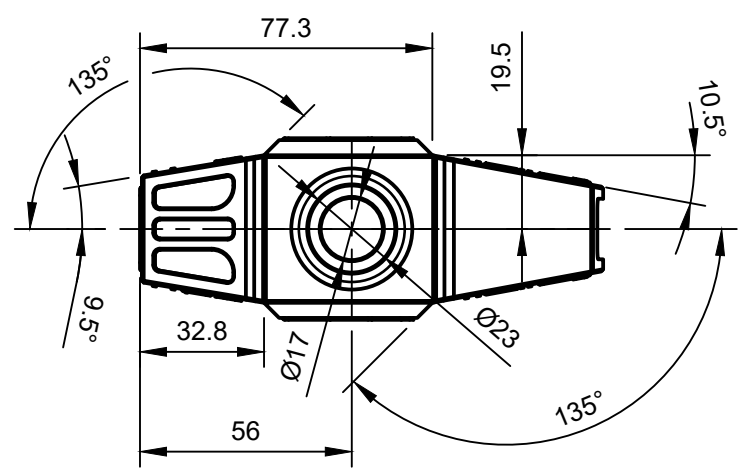
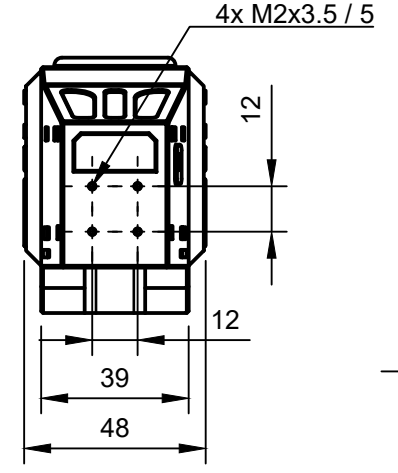
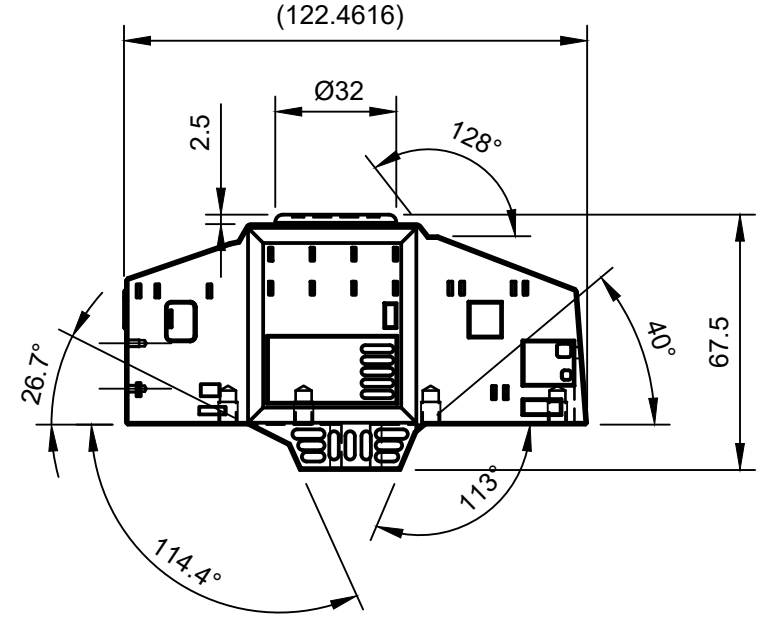
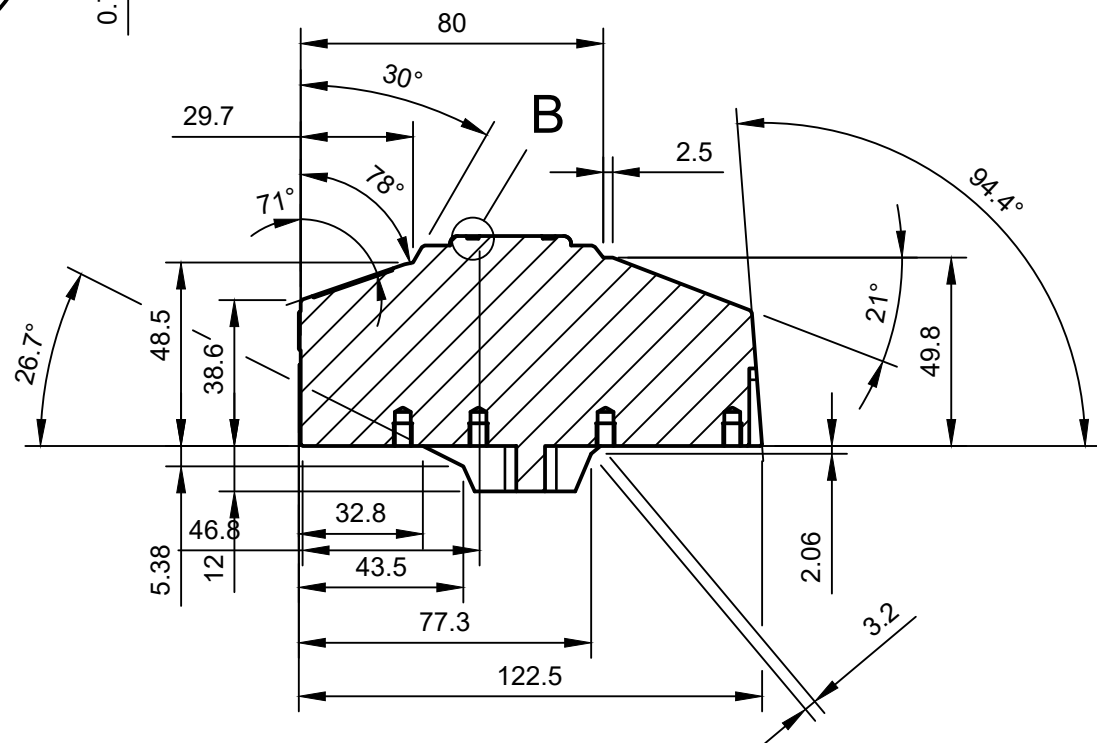
A
B
C
D
E
F



B (3:1)



A-A (1:2)

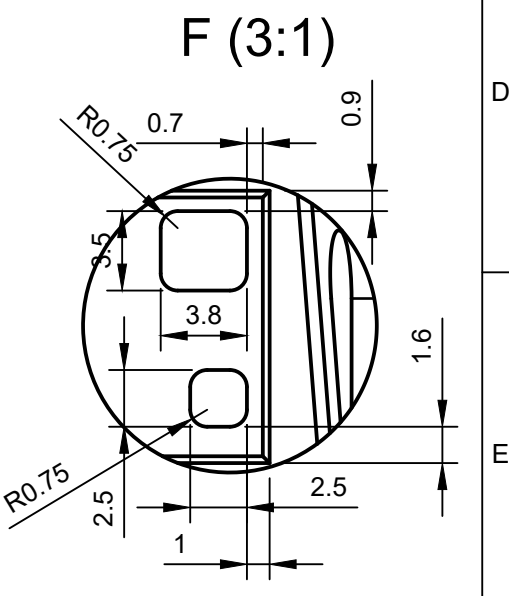
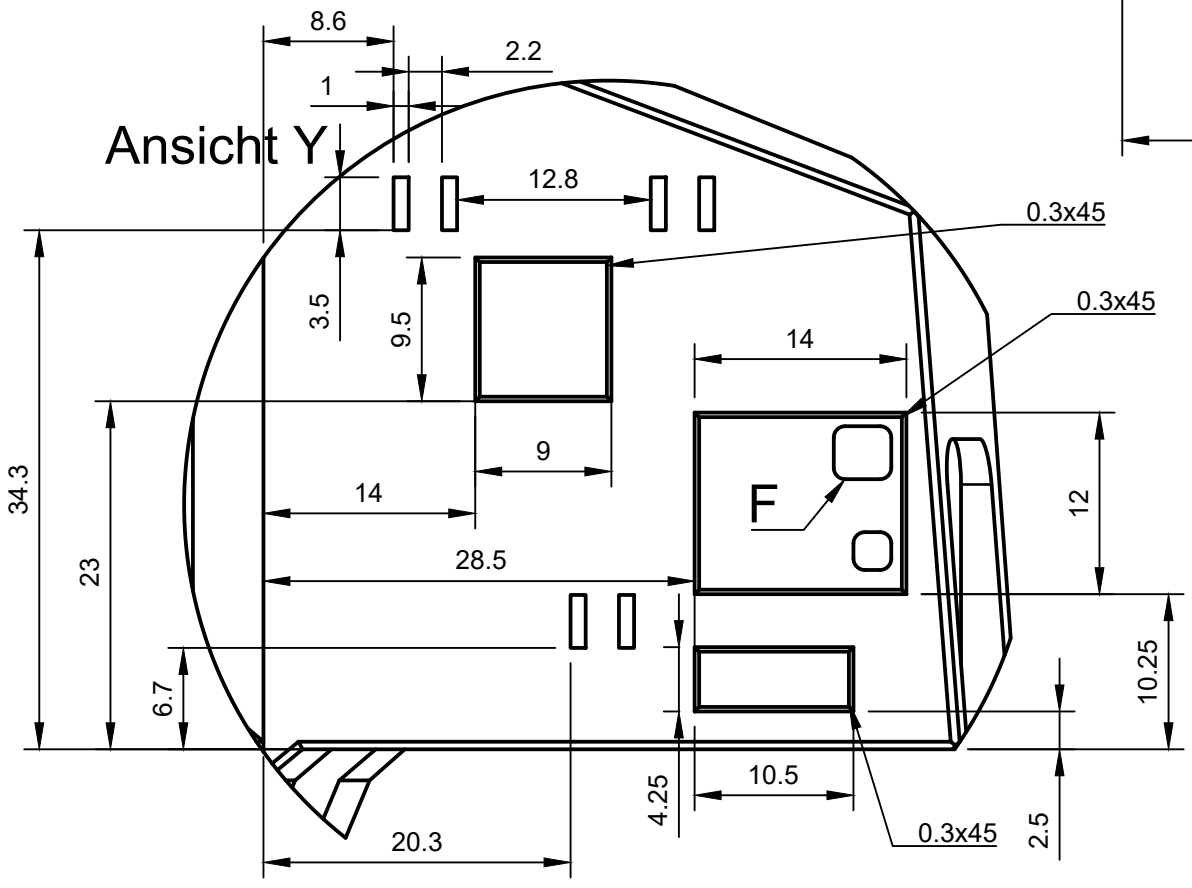
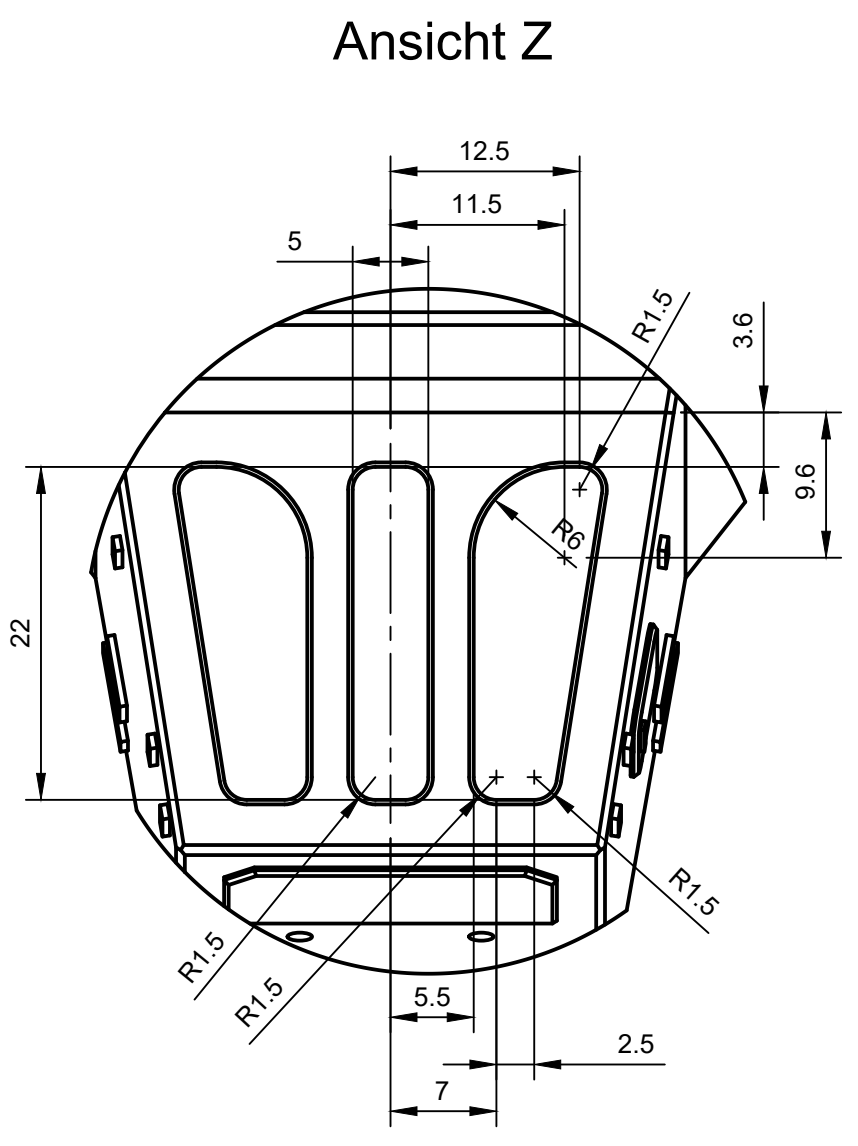
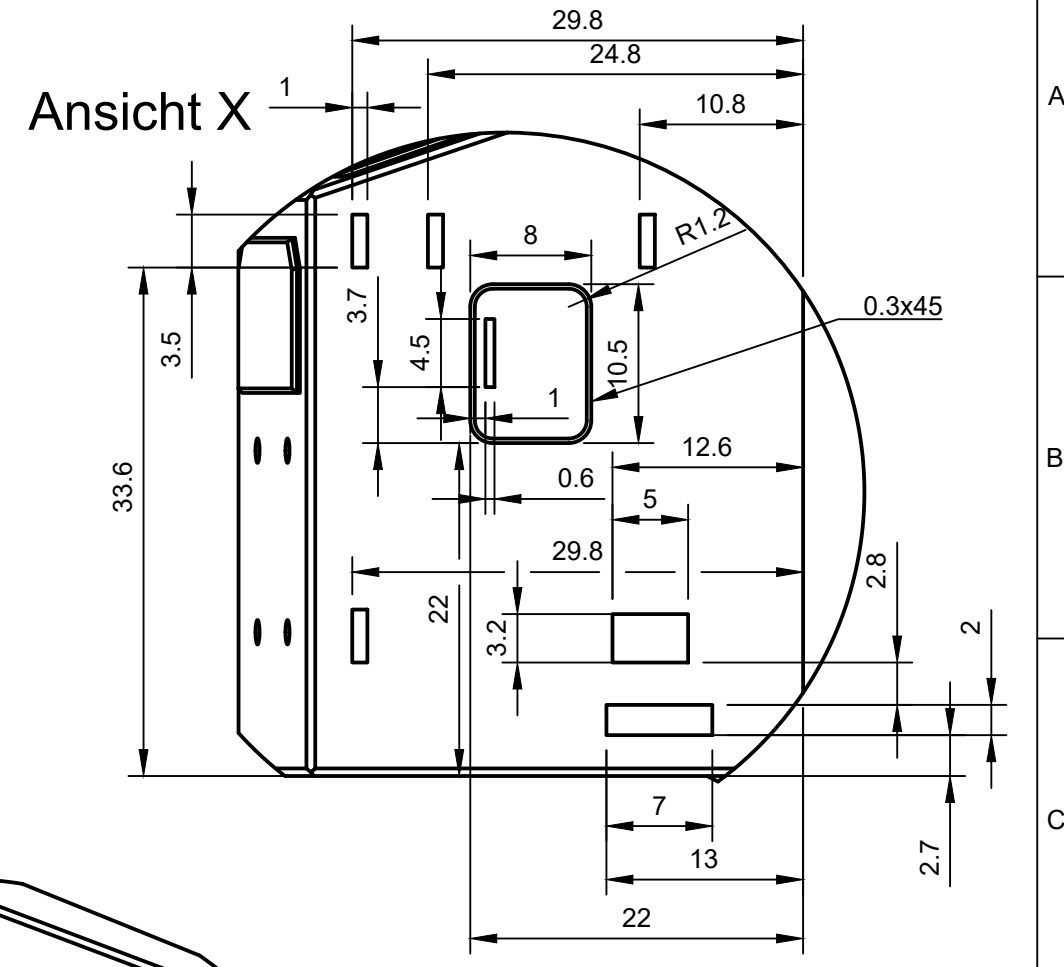
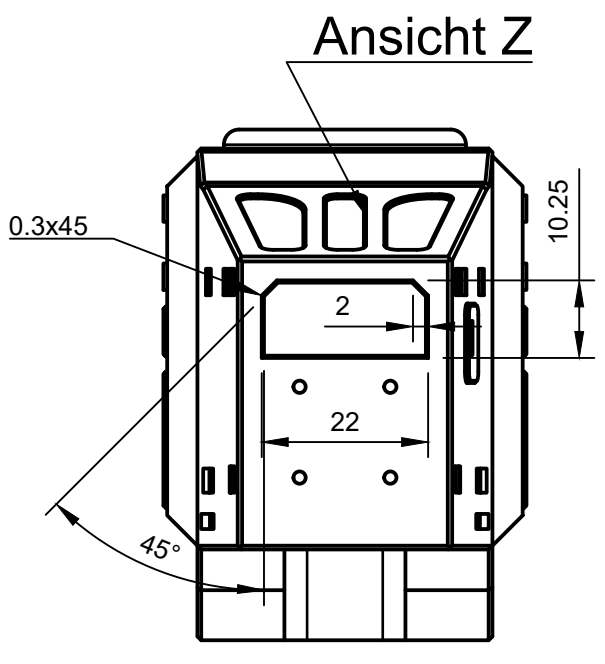
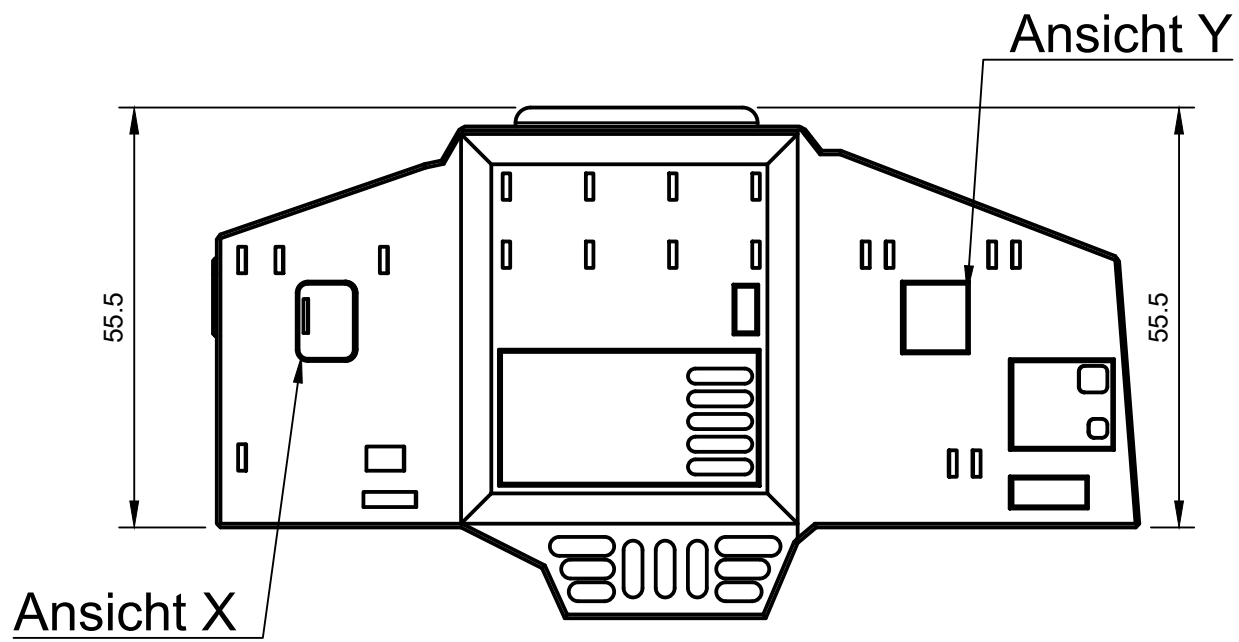


Dept.	Technical reference	Created by Marcus T.	18.02.2018	Approved by
		Document type		Document status
		Title AT-AT Walker Azubi Projekt Rumpf (Körper)		DWG No.
		Rev.	Date of issue	Sheet 1/19

1 2 3 4 5 6 7 8

1 2 3 4 5 6 7 8

A
B
C
D
E
F



Dept.	Technical reference	Created by Marcus T.	18.02.2018	Approved by
		Document type		Document status
		Title AT-AT Walker Azubi Projekt Rumpf (Details1)		DWG No.
		Rev.	Date of issue	Sheet 2/19

1 2 3 4 5 6 7 8

1 2 3 4 5 6 7 8

A

B

C

D

E

F

A

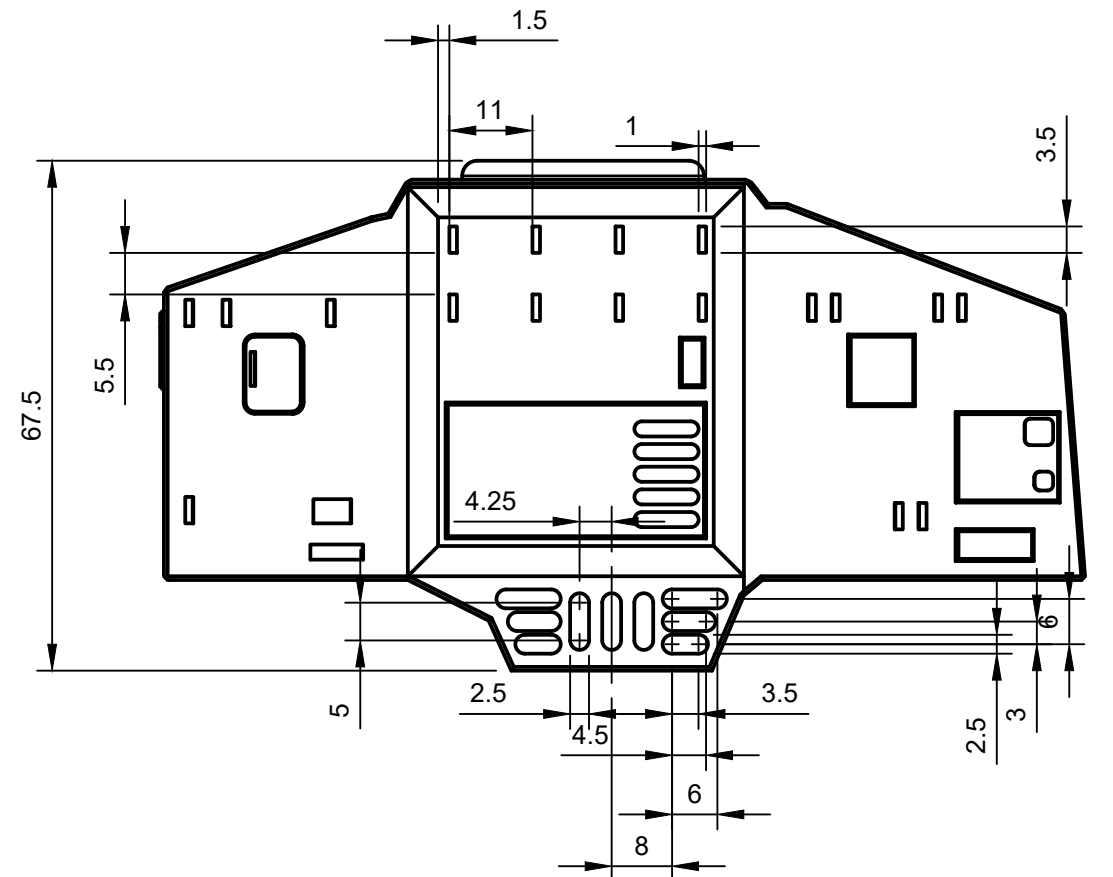
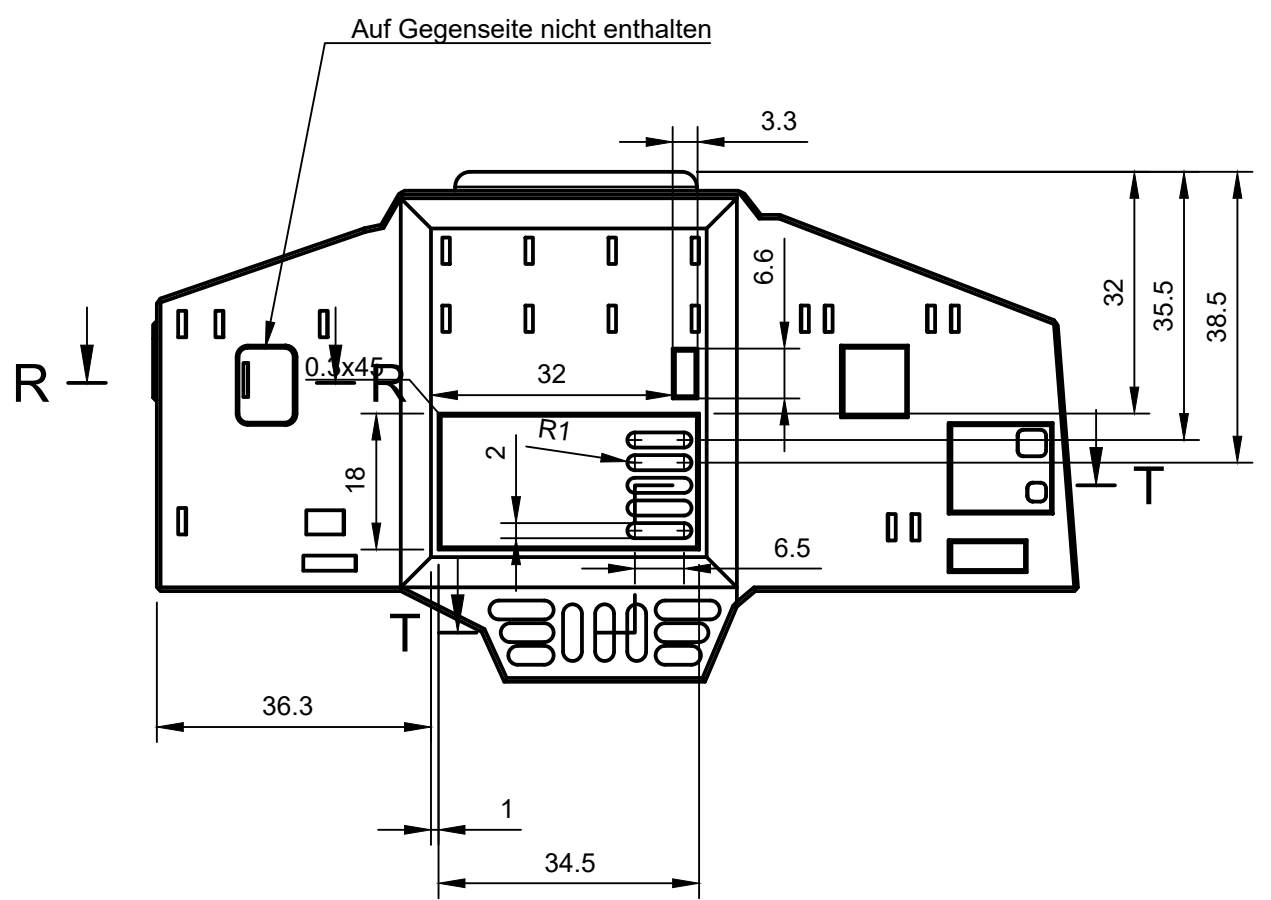
B

C

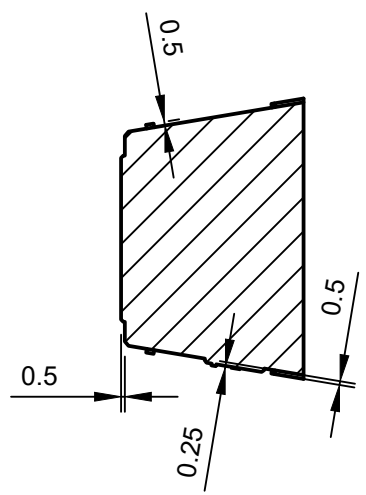
D

E

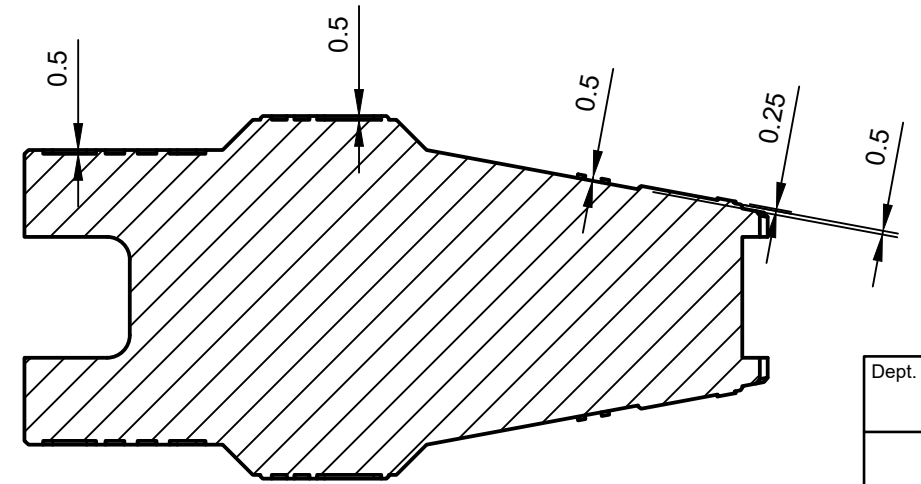
F



R-R (1:1)

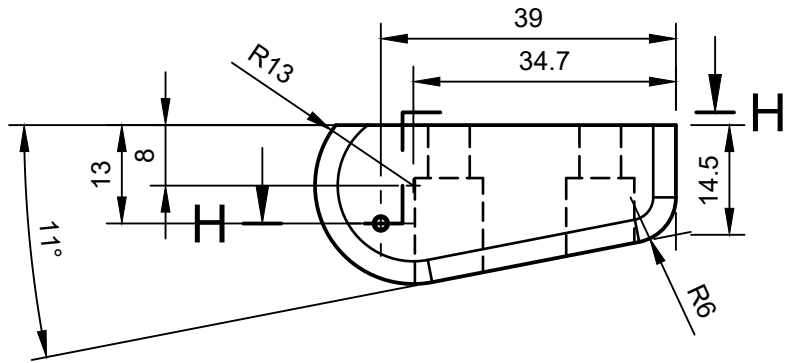


T-T (1:1)

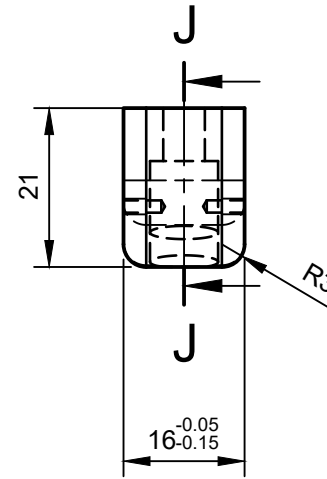


Dept.	Technical reference	Created by Marcus T.	18.02.2018	Approved by
		Document type	Document status	
		Title AT-AT Walker Azubi Projekt Rumpf (Details 2)	DWG No.	
Rev.	Date of issue	Sheet 3/19		

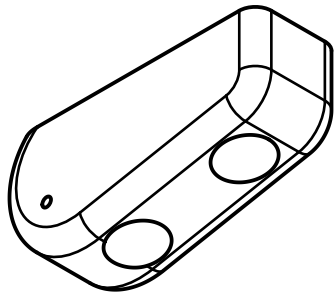
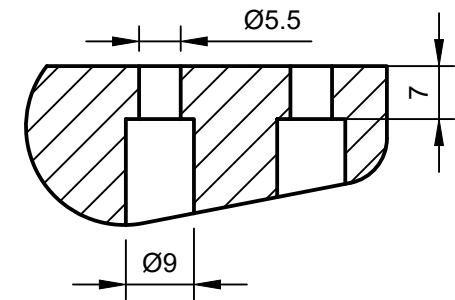
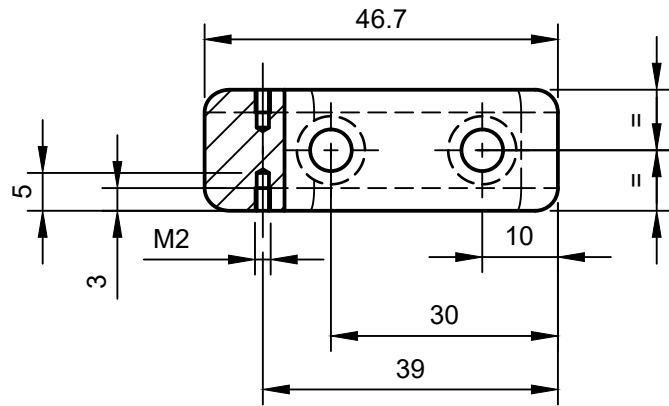
1 2 3 4 5 6 7 8



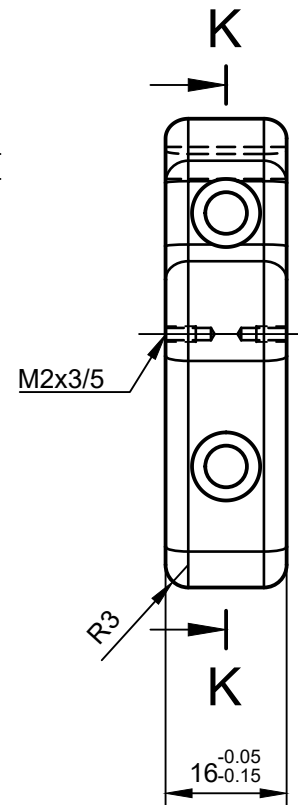
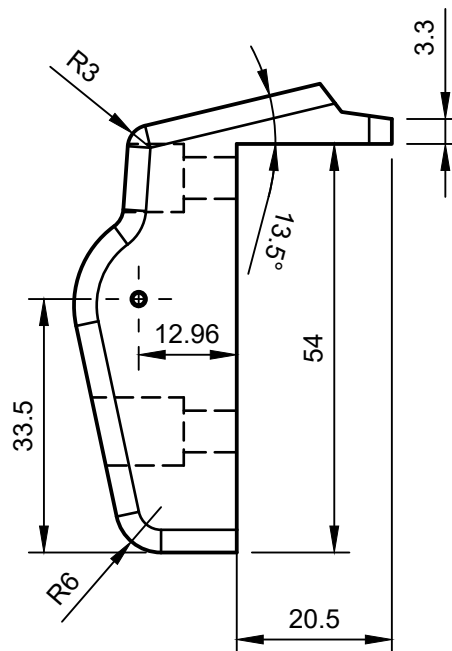
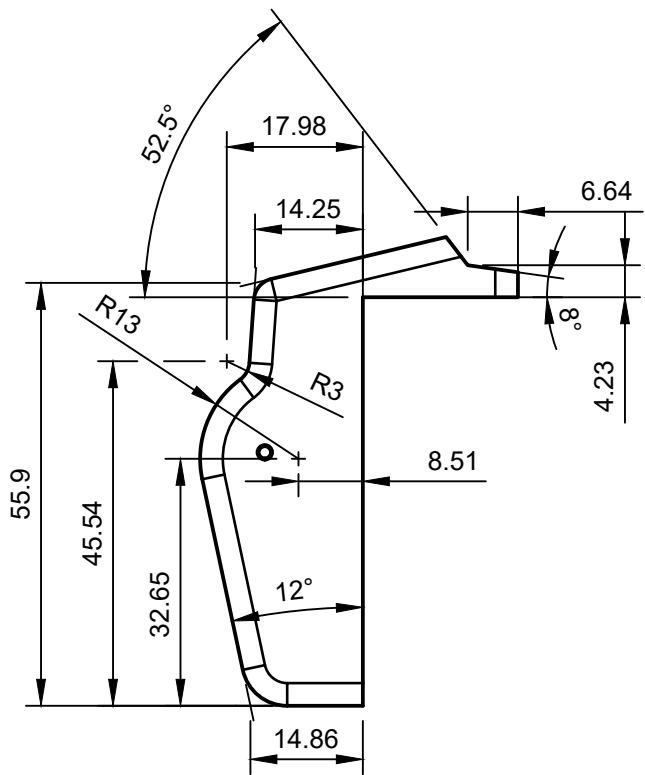
H-H (1:1)



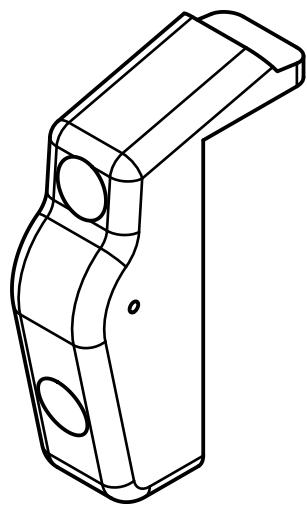
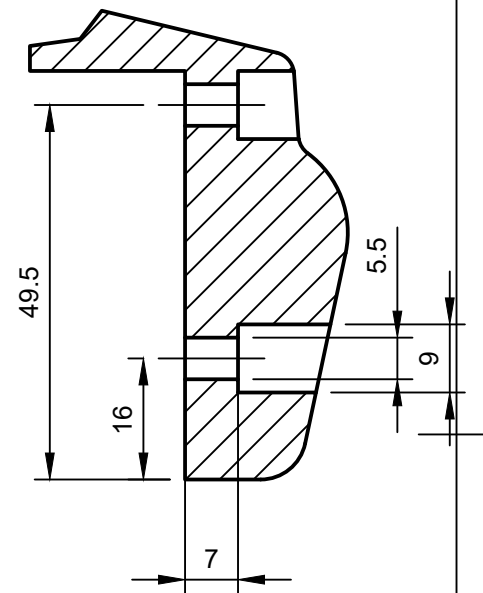
J-J (1:1)



Dept.	Technical reference	Created by Marcus T.	18.02.2018	Approved by
		Document type	Document status	
		Title AT-AT Walker Azubi Projekt Front Beinaufnahme	DWG No.	
Rev.	Date of issue	Sheet 4/19		

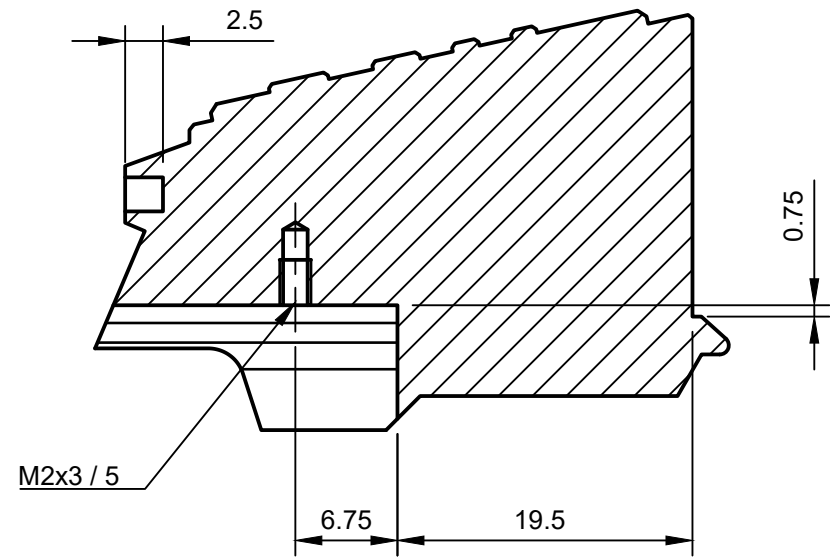


K-K (1:1)

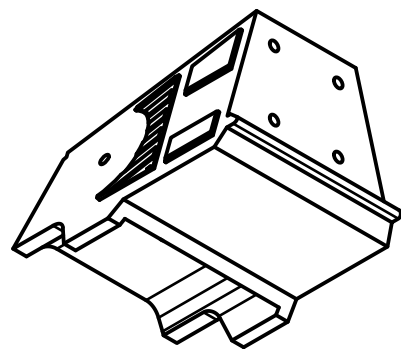
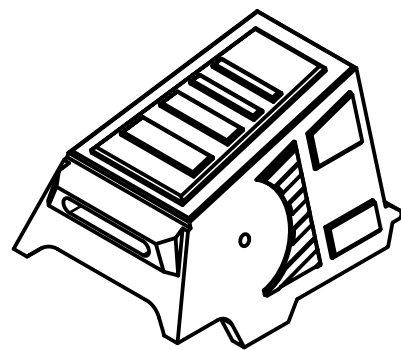
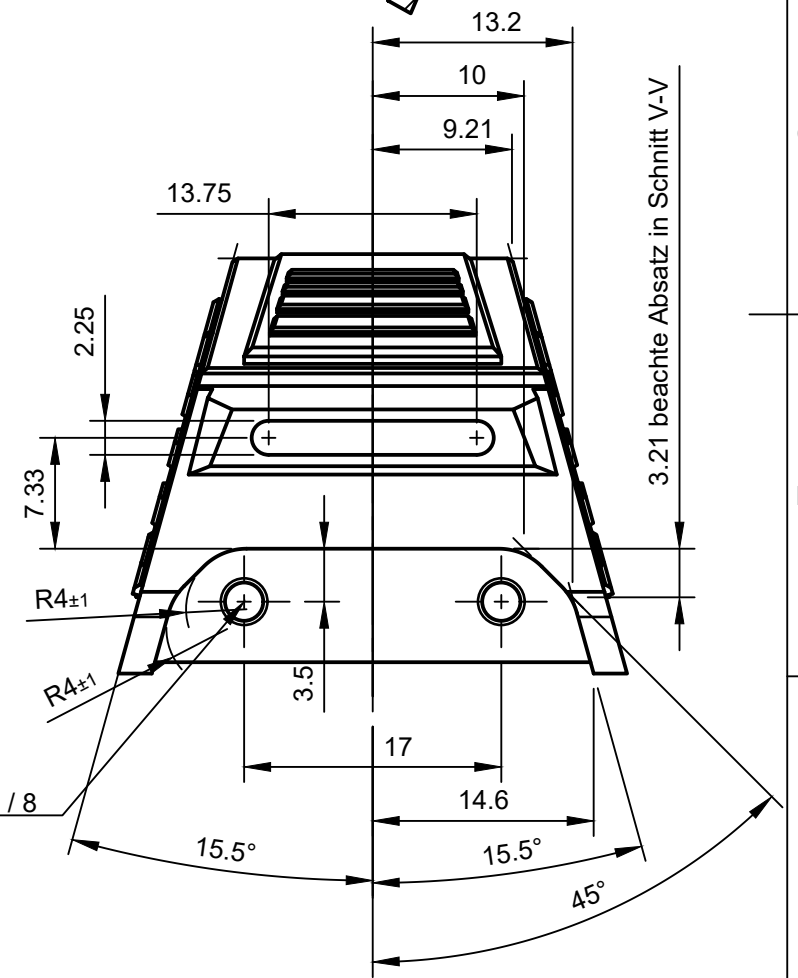
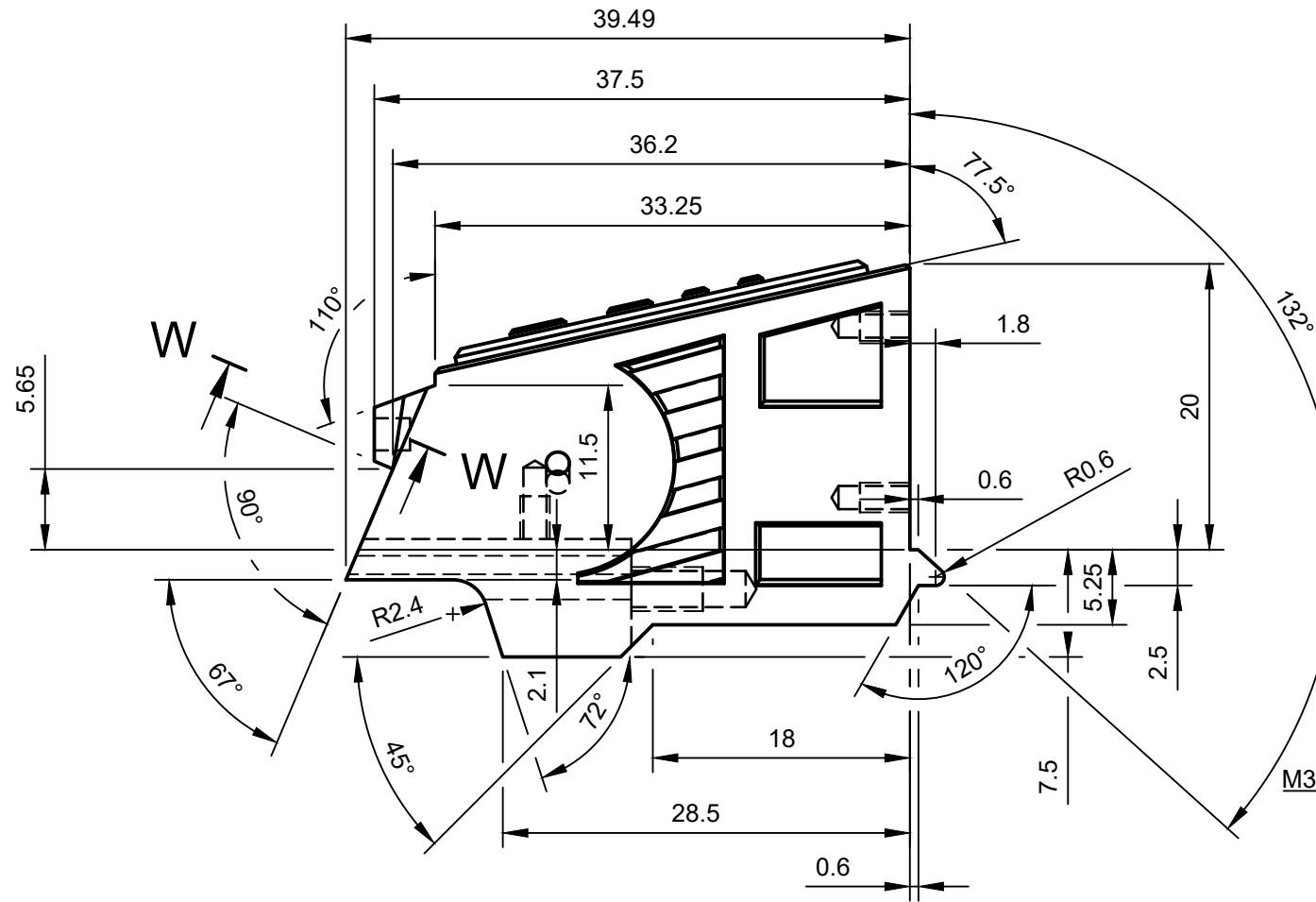
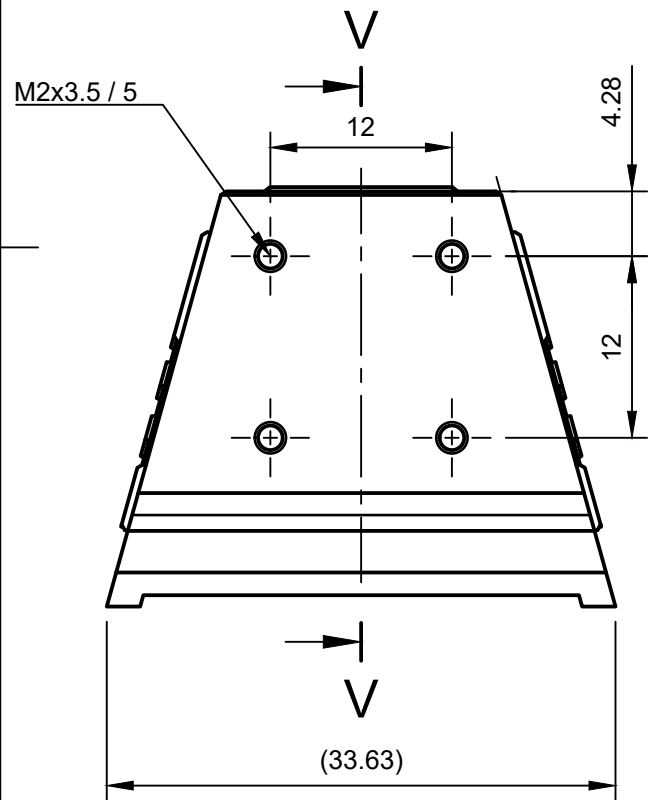
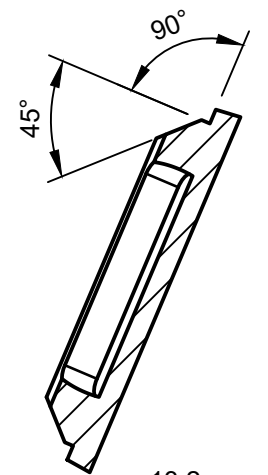


Dept.	Technical reference	Created by Marcus T.	18.02.2018	Approved by	
		Document type	Document status		
		Title AT-AT Walker Azubi Projekt Heck Beinaufnahme	DWG No.		
Rev.	Date of issue	Sheet		5/19	

V-V (2:1)

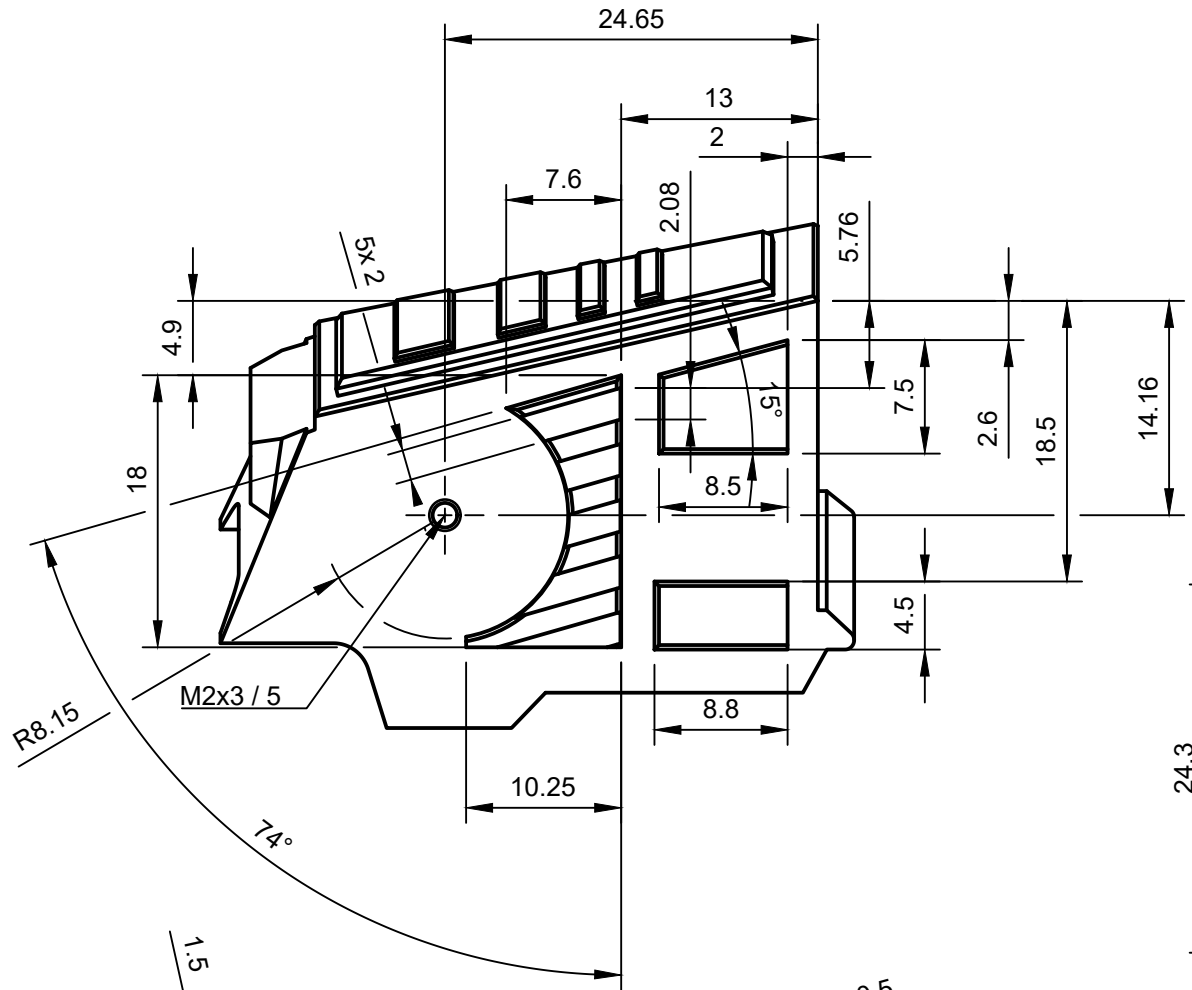


W-W (2:1)

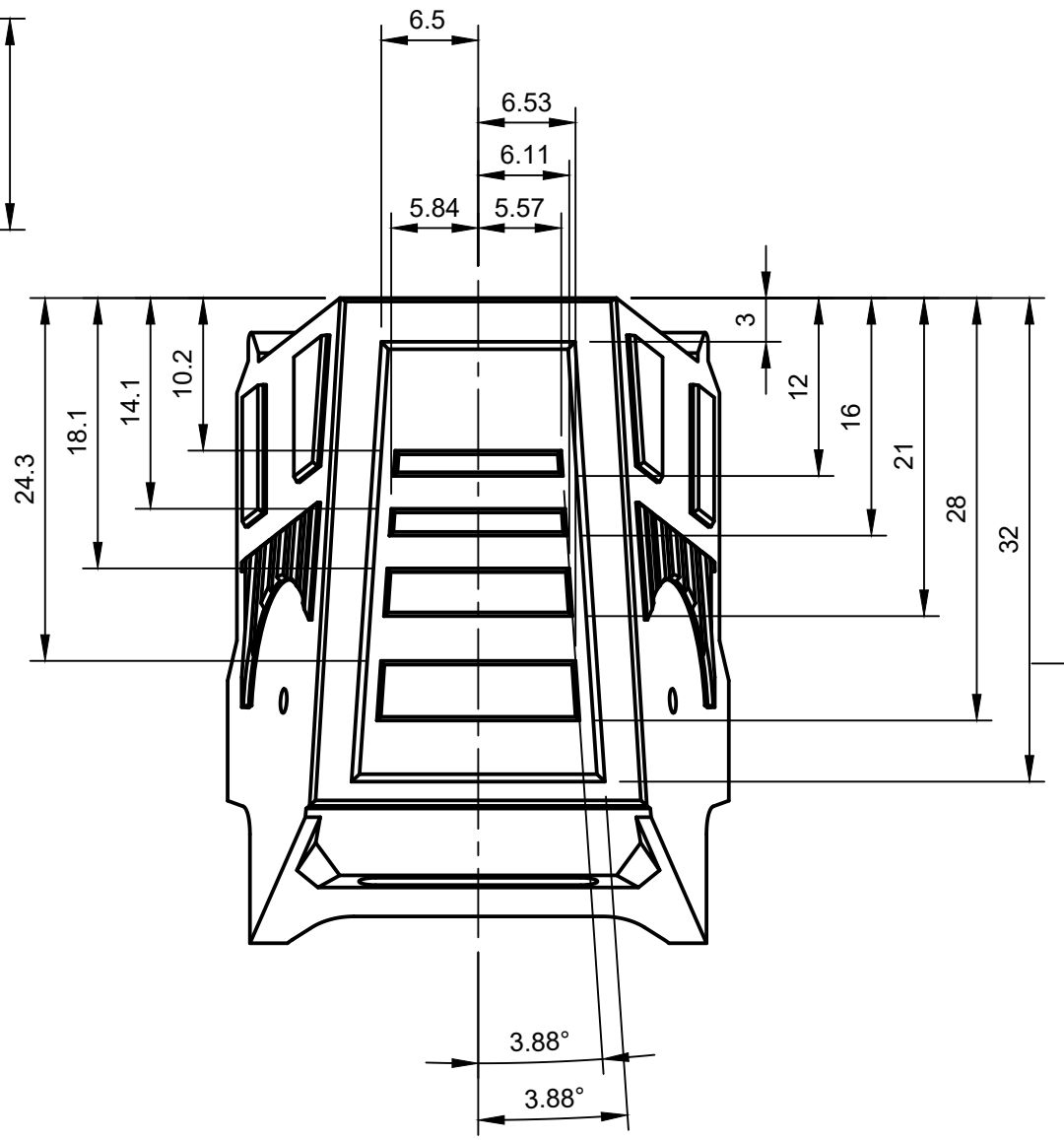


Dept.	Technical reference	Created by Marcus T.	18.02.2018	Approved by
		Document type		Document status
		Title AT-AT Walker Azubi Projekt Kopf (Körper)		DWG No.
		Rev.	Date of issue	Sheet 6/19

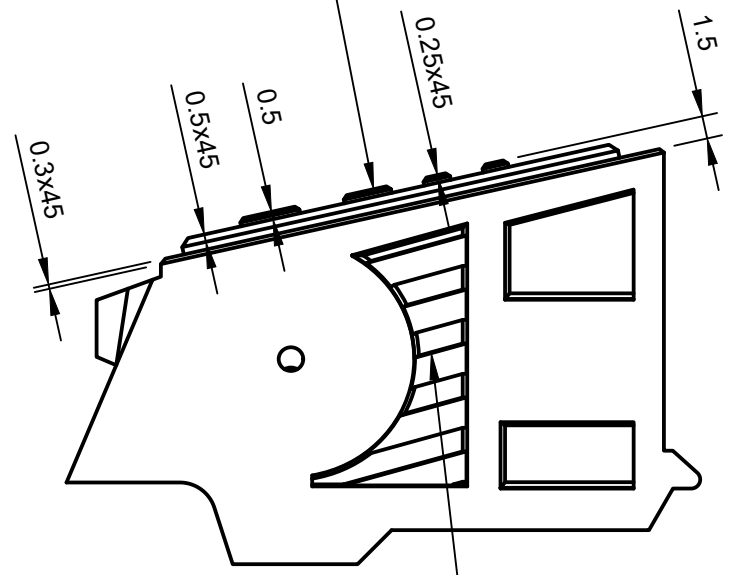
Ansicht Kopf Seite



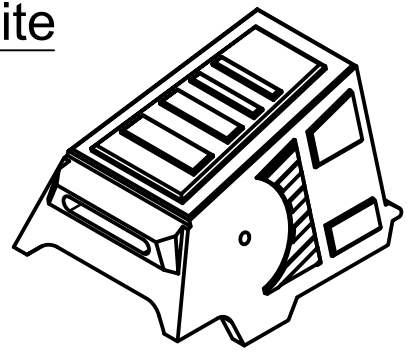
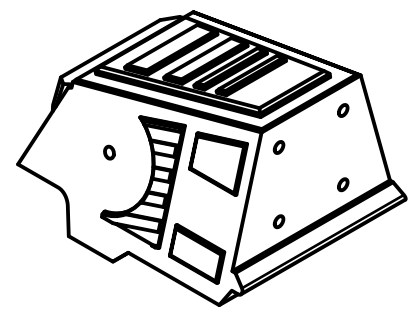
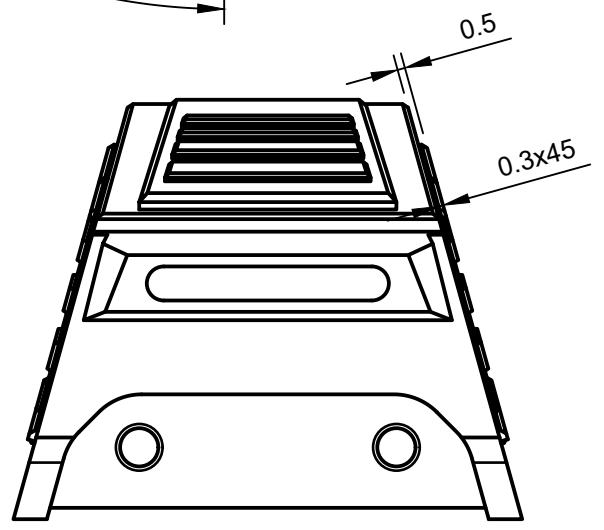
Ansicht Kopf Oben



Ansicht Kopf oben

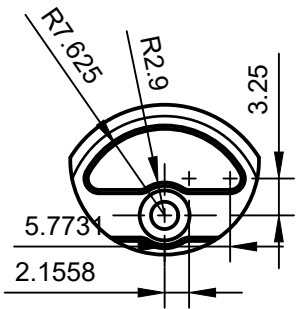


Ansicht Kopf Seite



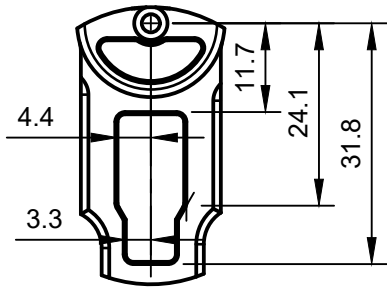
Dept.	Technical reference	Created by Marcus T.	18.02.2018	Approved by
		Document type	Document status	
		Title AT-AT Walker Azubi Projekt Kopf (Details)	DWG No.	
Rev.	Date of issue	Sheet		7/19

Q (1.5:1)



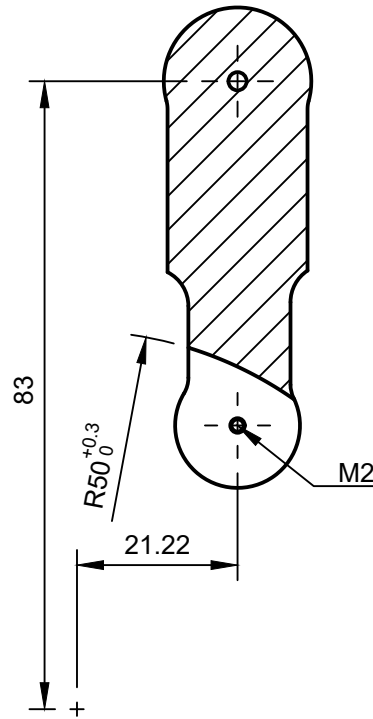
O (1:1)

Alle unbemassten Radien zum verrunden R1

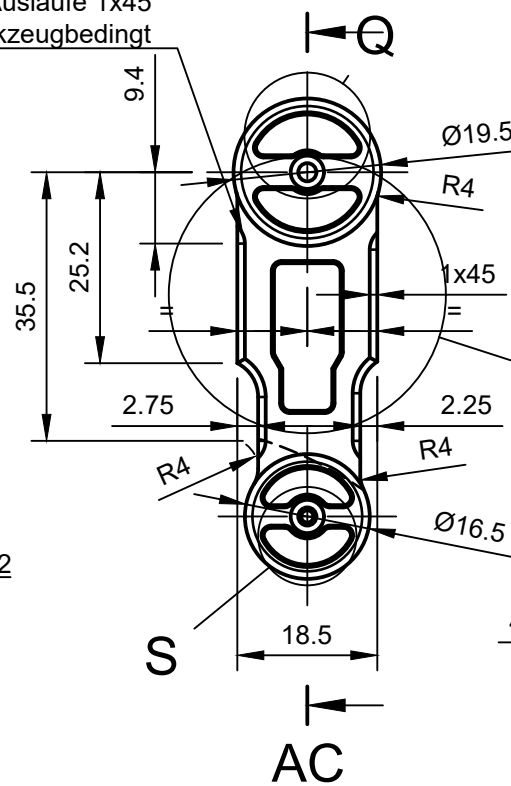


AB-AB (1:1)

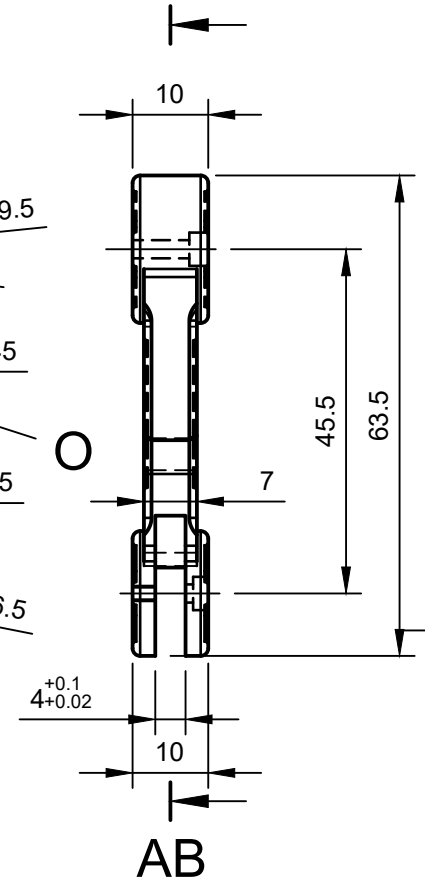
Alle Ausläufe 1x45
Werkzeugbedingt



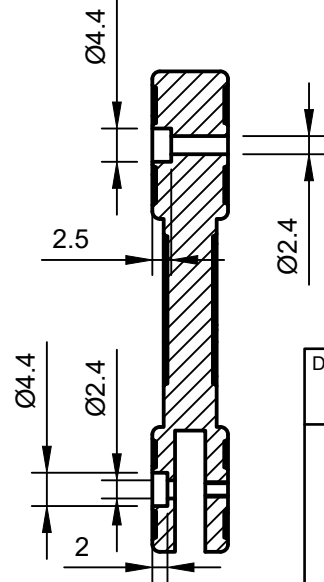
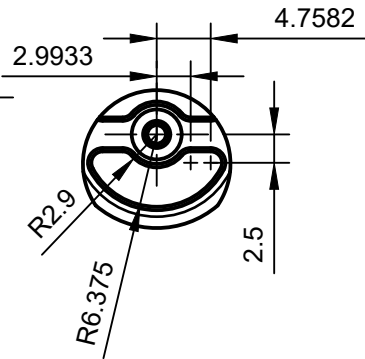
AC



AB



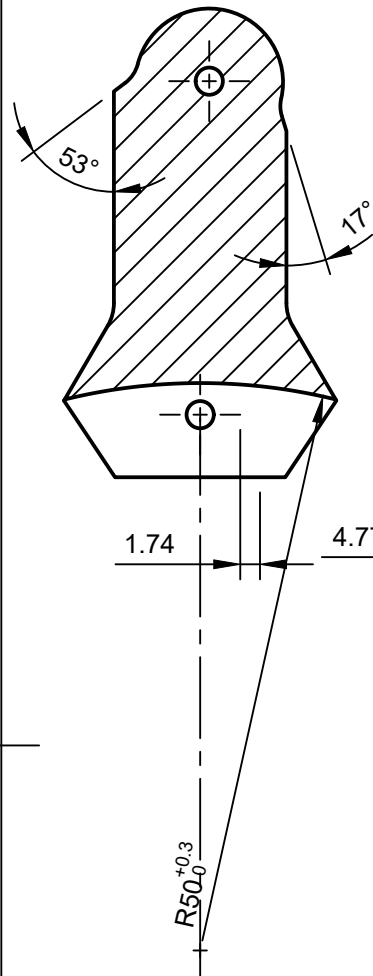
S (1.5:1)



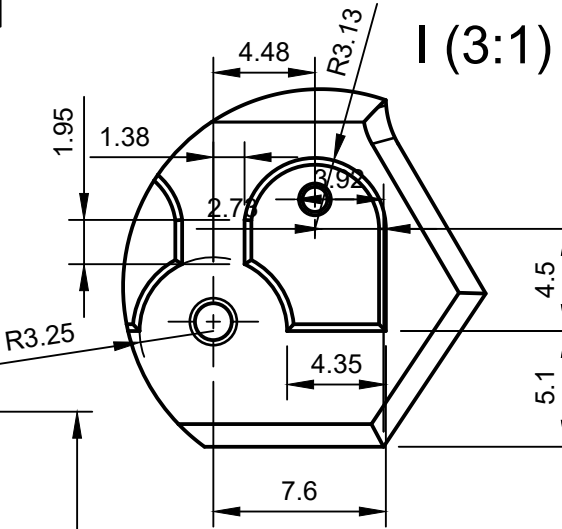
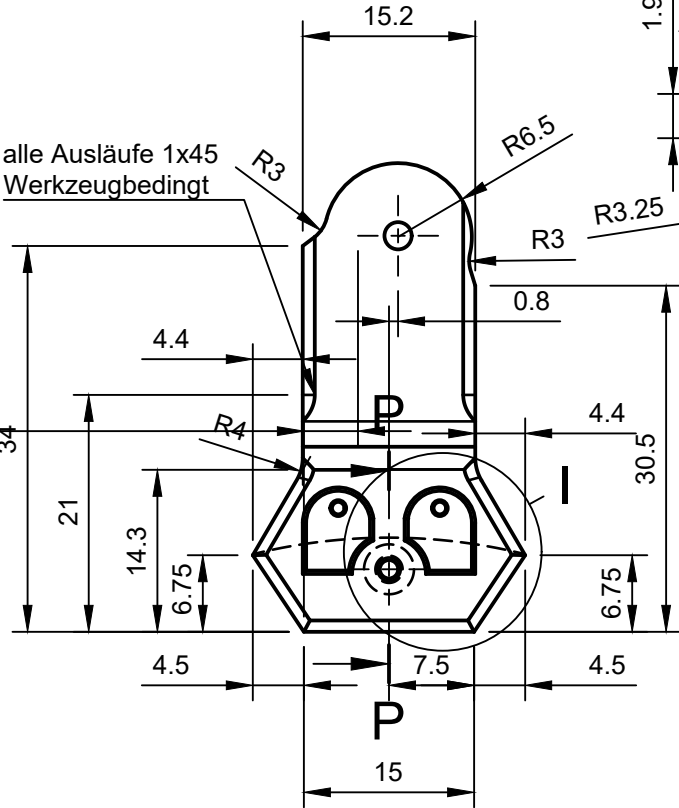
Alle Bohrungen Ø4.4 /
Ø2.4 / M2 für Linke
Ausführung Spiegelbildlich

AC-AC (1:1)

Dept.	Technical reference	Created by Marcus T.	18.02.2018	Approved by	
		Document type	Document status		
		Title AT-AT Walker Azubi Projekt Oberschenkel Rechts Oberschenkel Links	DWG No.		
Rev.	Date of issue	Sheet		8/19	

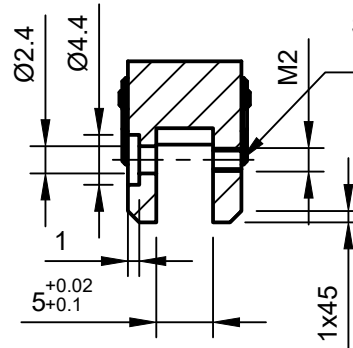


alle Ausläufe 1x45
Werkzeugbedingt

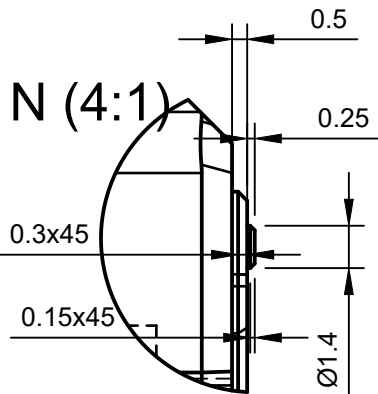
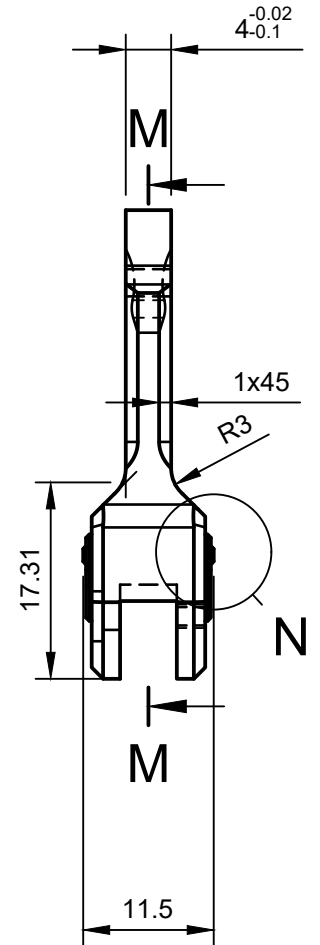


I (3:1)

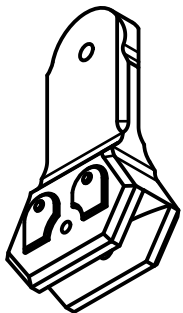
P-P (1.5:1)



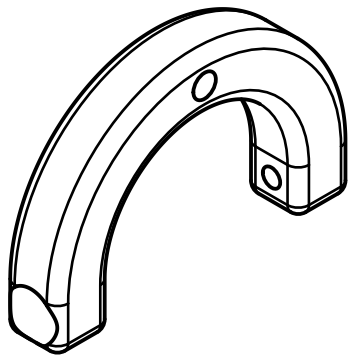
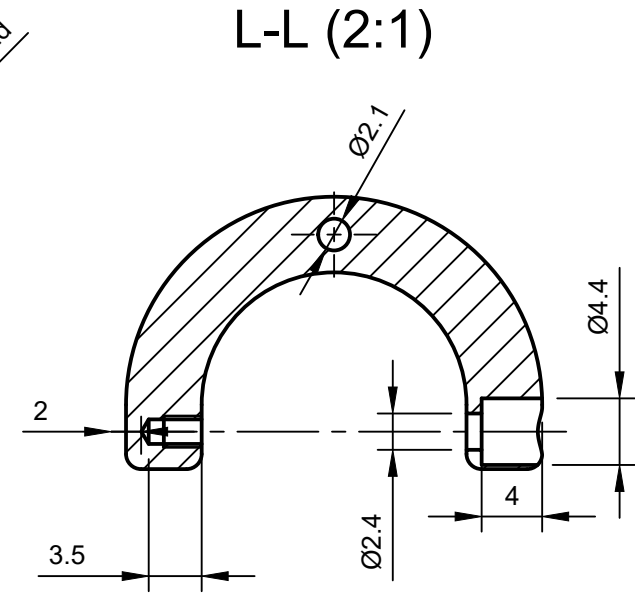
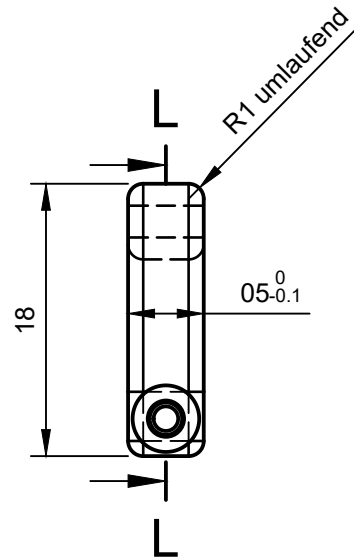
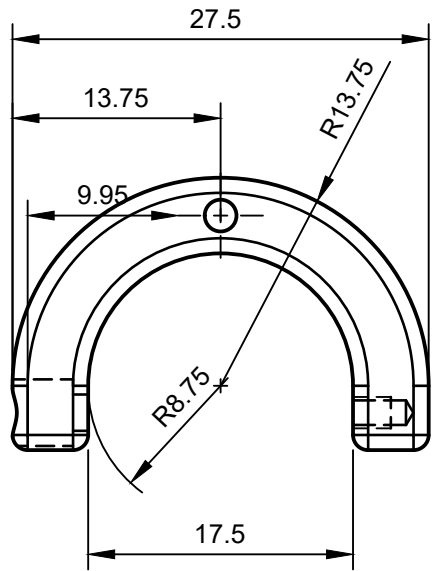
Bohrung,
Senkung und
Gewinde
für Linke Seite
Spiegelbildlich
fertigen



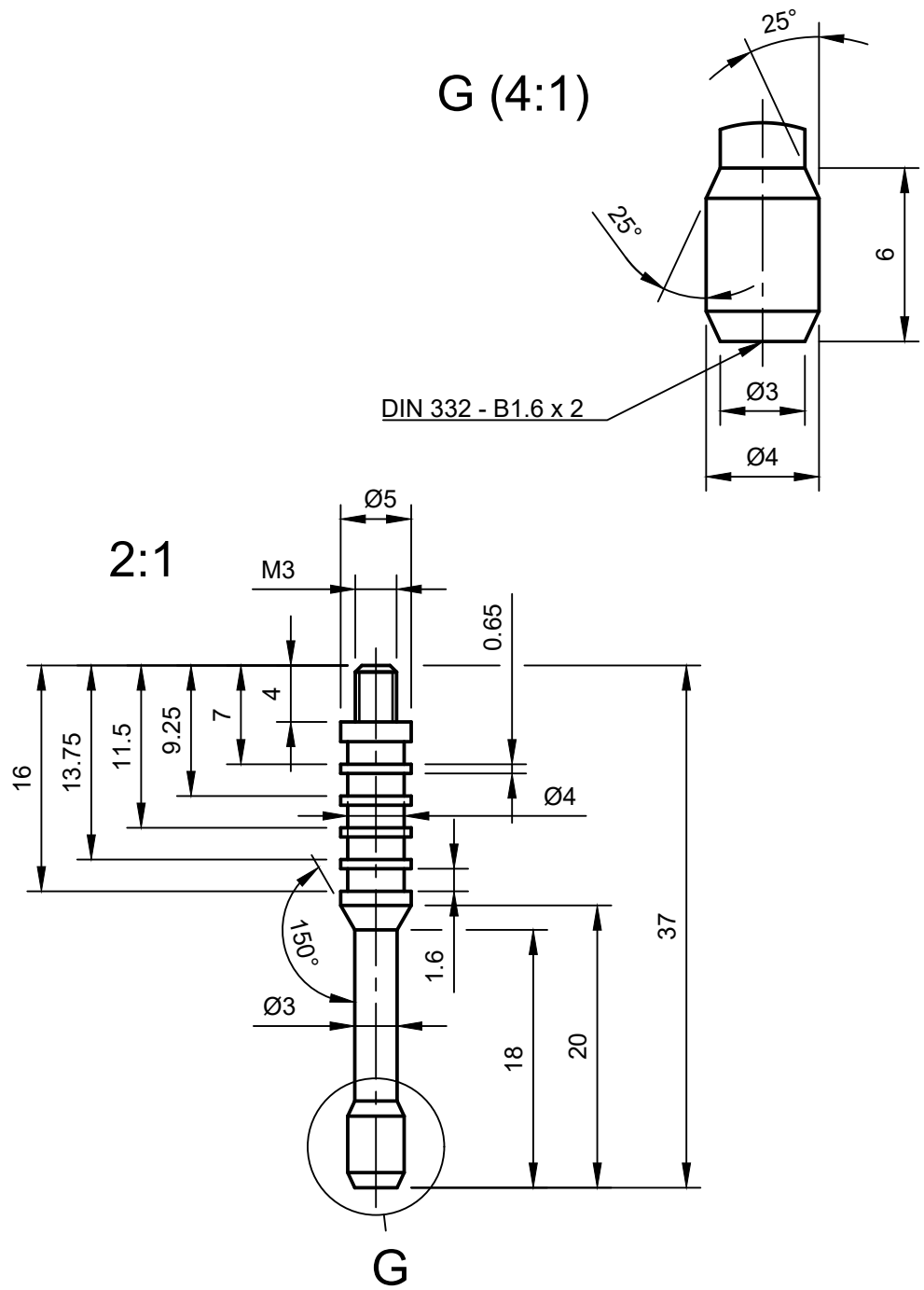
N (4:1)



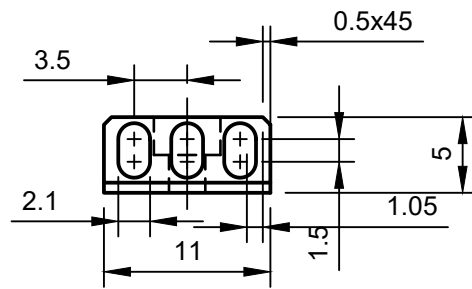
Dept.	Technical reference	Created by Marcus T.	18.02.2018	Approved by	
		Document type	Document status		
		Title AT-AT Walker Azubi Projekt Unterschenkel Rechts Unterschenkel Links	DWG No.		
Rev.	Date of issue	Sheet		9/19	



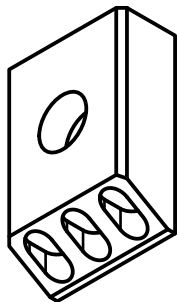
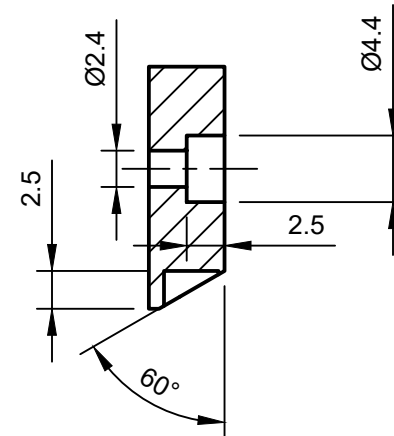
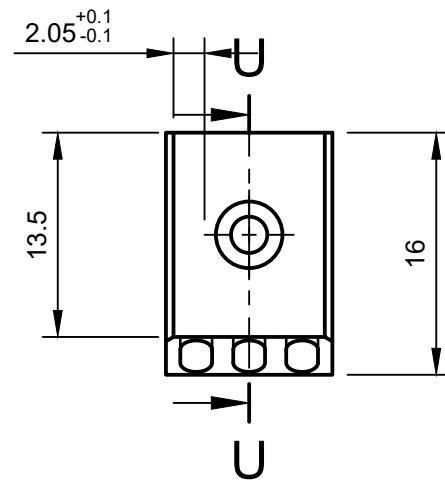
Dept.	Technical reference	Created by Marcus T.	18.02.2018	Approved by
		Document type	Document status	
		Title AT-AT Walker Azubi Projekt Fussgelenk	DWG No.	
		Rev.	Date of issue	Sheet 10/19



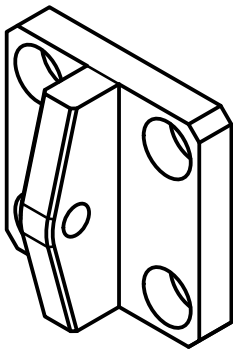
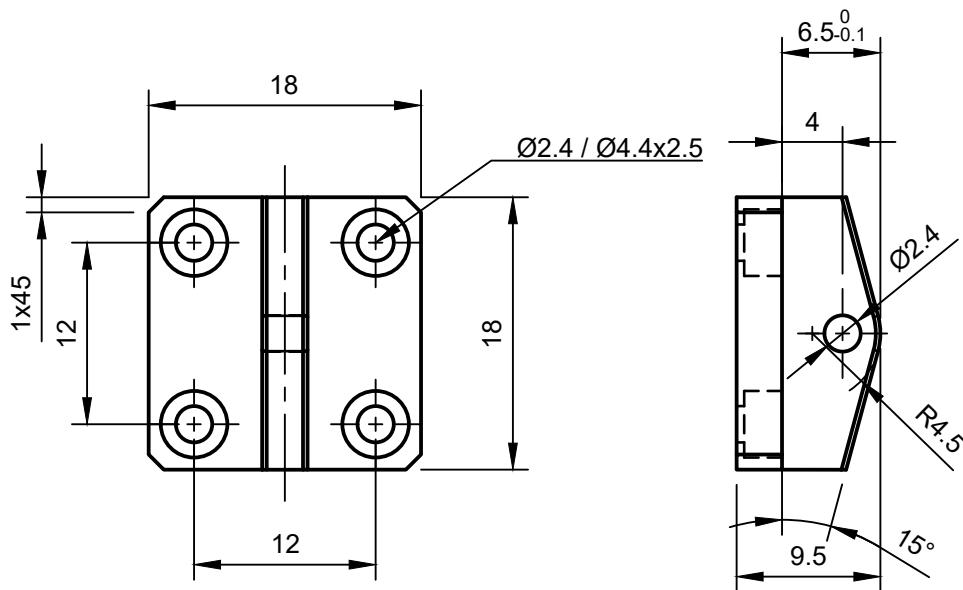
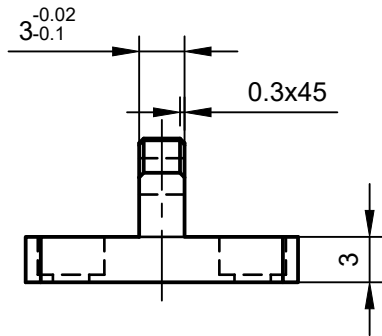
Dept.	Technical reference	Created by Marcus T. 18.02.2018	Approved by	
		Document type	Document status	
		Title AT-AT Walker Azubi Projekt Frontwaffe	DWG No.	
		Rev.	Date of issue	Sheet 11/19



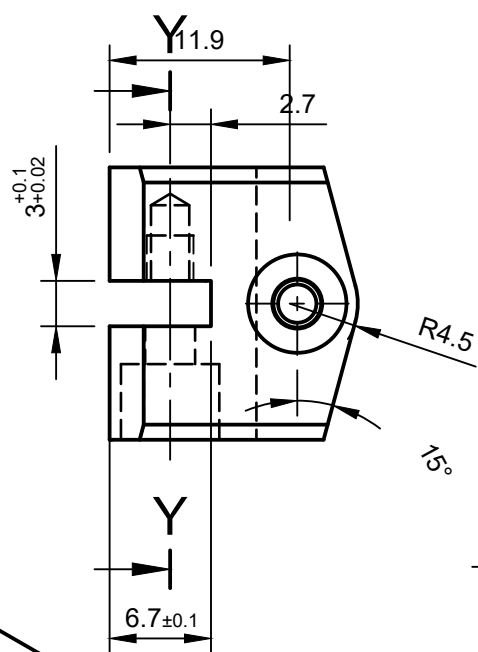
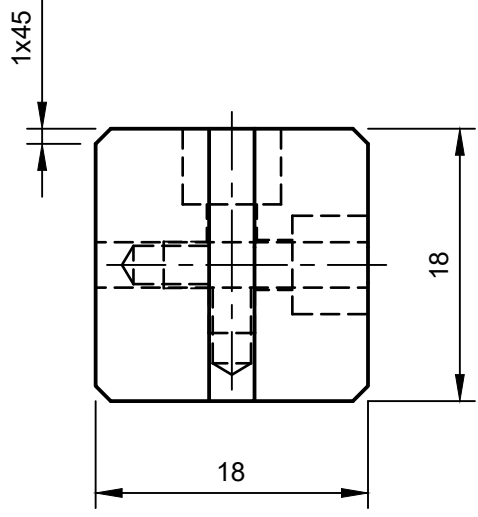
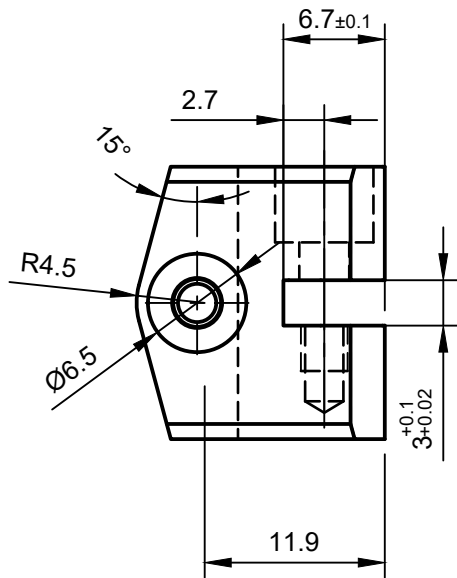
U-U (2:1)



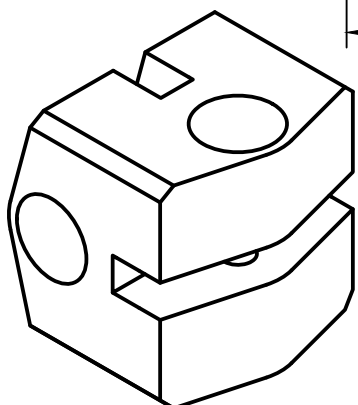
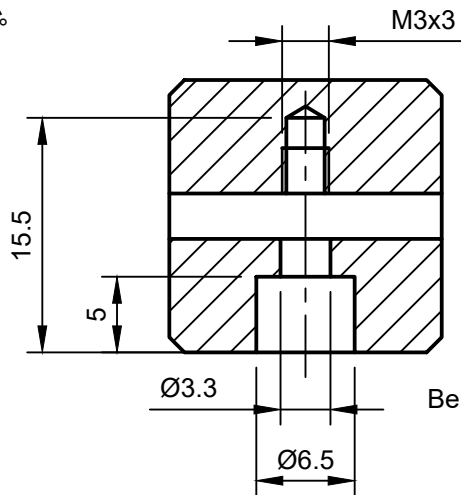
Dept.	Technical reference	Created by Marcus T. 18.02.2018	Approved by	
		Document type	Document status	
		Title AT-AT Walker Azubi Projekt Unterbau Kopf	DWG No.	
		Rev.	Date of issue	Sheet 12/19



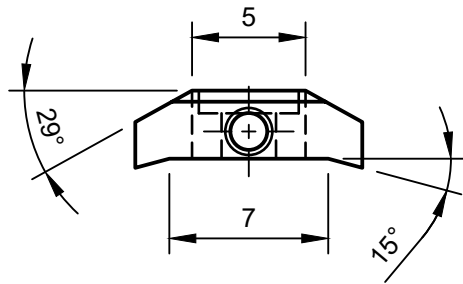
Dept.	Technical reference	Created by Marcus T. 18.02.2018	Approved by	
		Document type	Document status	
		Title AT-AT Walker Azubi Projekt Hals Kopfseite Hals Rumpfseite	DWG No.	
		Rev.	Date of issue	Sheet 13/19



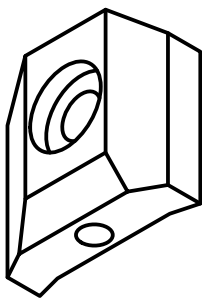
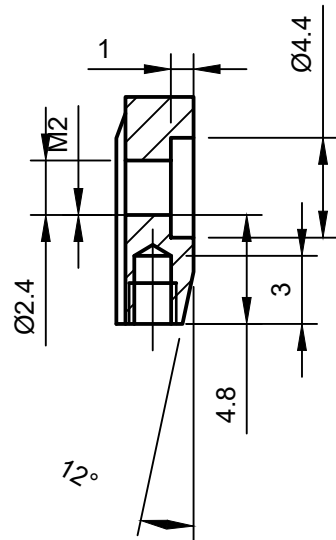
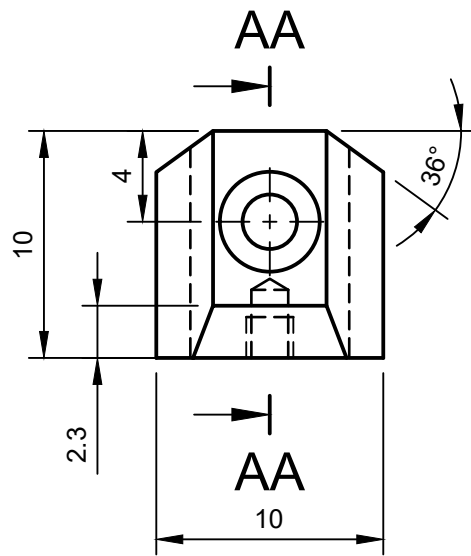
Y-Y (2:1)



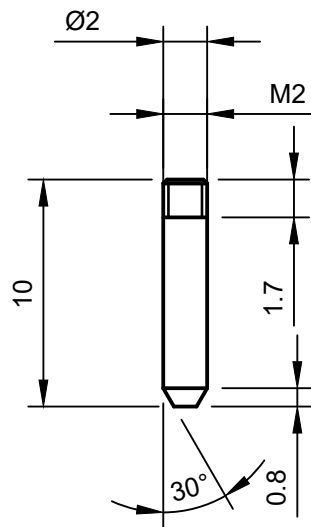
Dept.	Technical reference	Created by Marcus T.	18.02.2018		Approved by
		Document type	Document status		
		Title AT-AT Walker Azubi Projekt Hals Mittelteil	DWG No.		
		Rev.	Date of issue	Sheet 14/19	



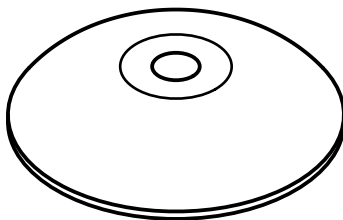
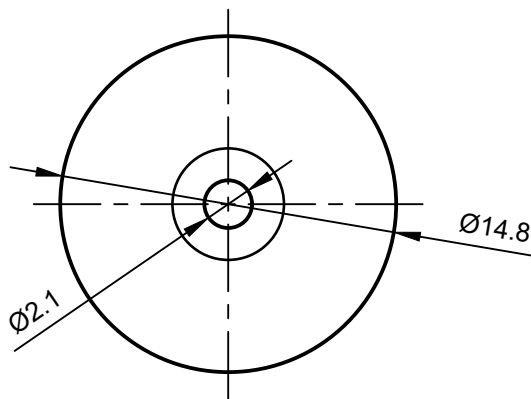
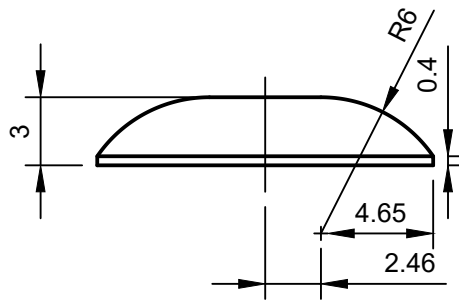
AA-AA (3:1)



Dept.	Technical reference	Created by Marcus T.	Approved by	
		18.02.2018		
		Document type	Document status	
		Title AT-AT Walker Azubi Projekt Seitenwaffe Kopf	DWG No.	
		Rev.	Date of issue	Sheet 15/19

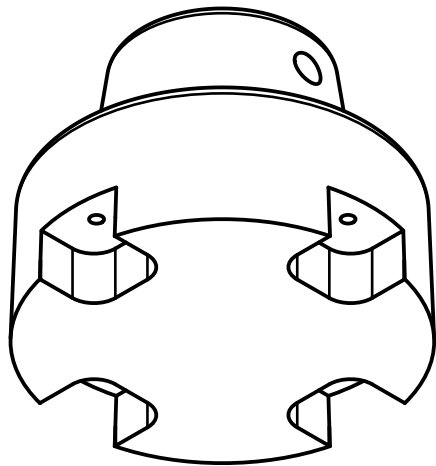
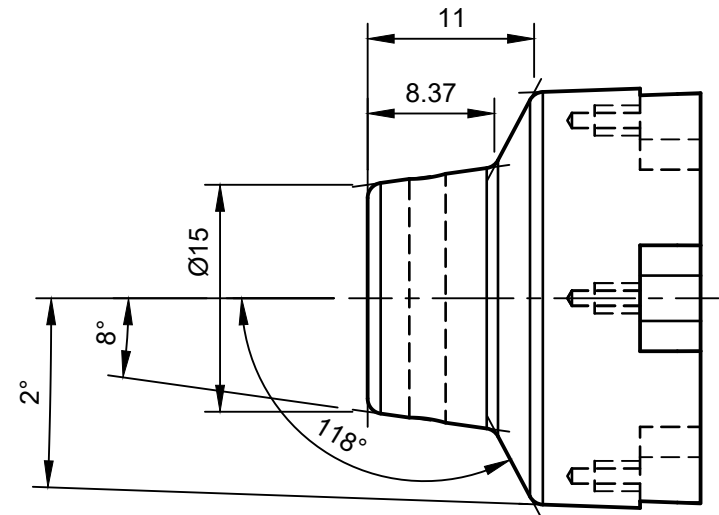
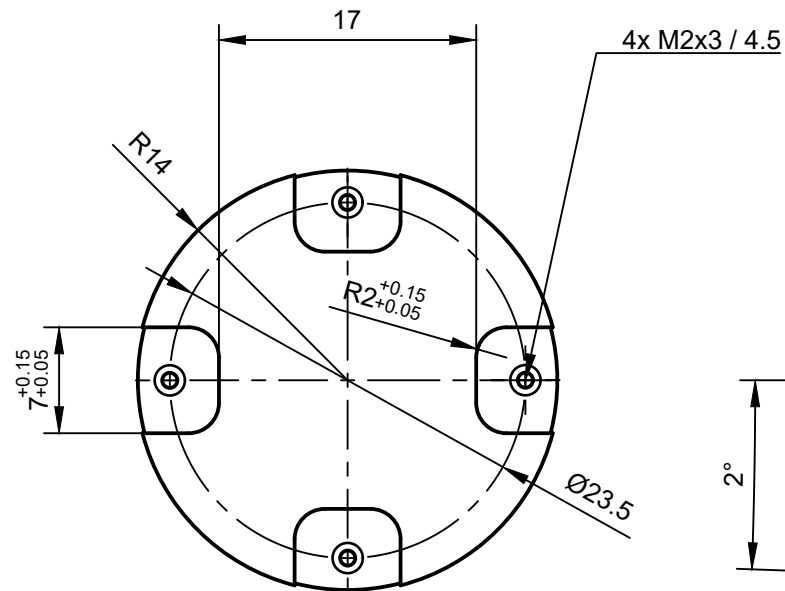
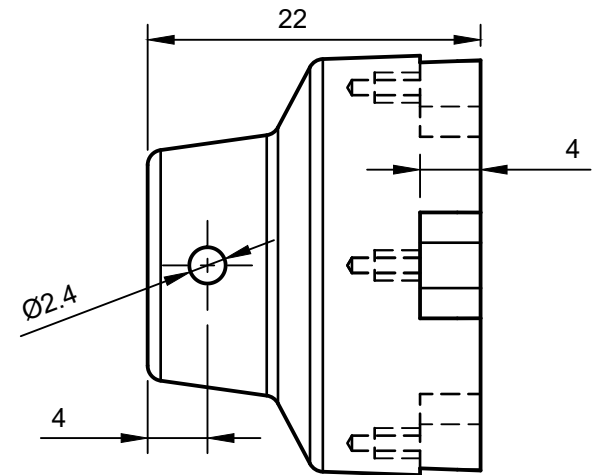


Dept.	Technical reference	Created by Marcus T.	18.02.2018		Approved by
		Document type	Document status		
		Title AT-AT Walker Azubi Projekt Seitenwaffe Lauf	DWG No.		
		Rev.	Date of issue	Sheet 16/19	

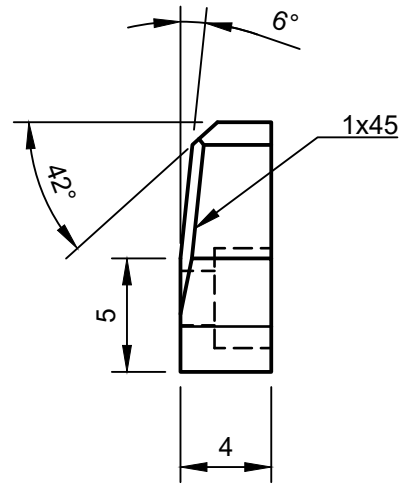
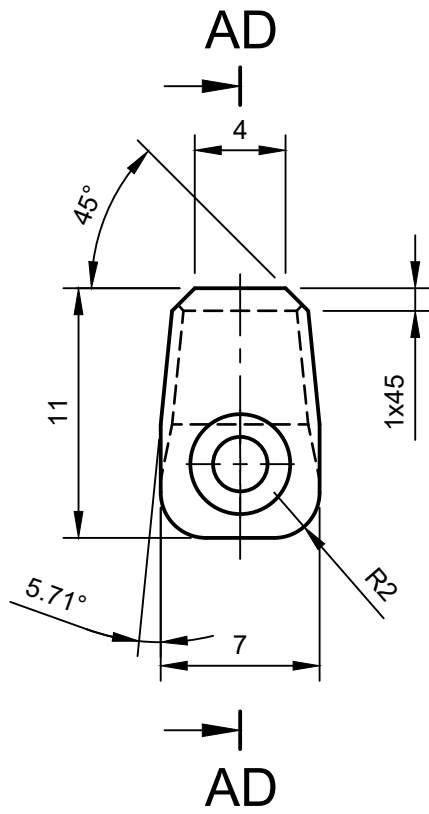


Dept.	Technical reference	Created by Marcus T.	Approved by	
		18.02.2018		
		Document type	Document status	
		Title AT-AT Walker Azubi Projekt Seitenwaffe Basis	DWG No.	
		Rev.	Date of issue	Sheet 17/19

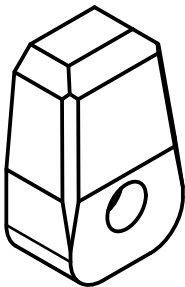
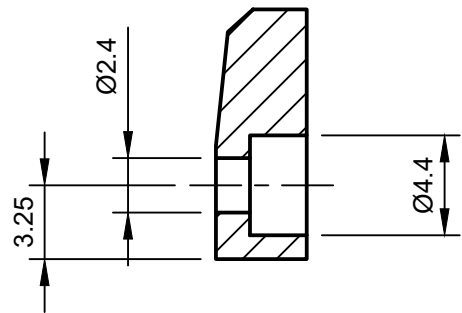
Alle Verrundungsradien R1



Dept.	Technical reference	Created by Marcus T.	18.02.2018	Approved by	
		Document type	Document status		
		Title AT-AT Walker Azubi Projekt Fuss	DWG No.		
Rev.	Date of issue	Sheet 18/19			



AD-AD (3:1)



Dept.	Technical reference	Created by Marcus T.	18.02.2018	Approved by
		Document type		Document status
		Title AT-AT Walker Azubi Projekt Zehe		DWG No.
		Rev.	Date of issue	Sheet 19/19